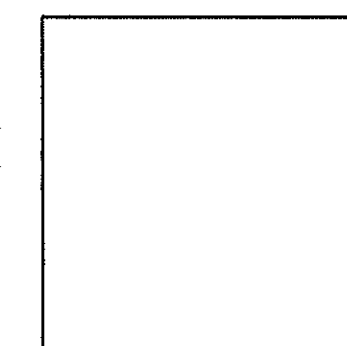


DATE	SEPT. 24, 2011
REVISION DESCRIPTION	PROJECT START UP @ SITE
REV. #	INITIAL PERMIT SUBMISSION

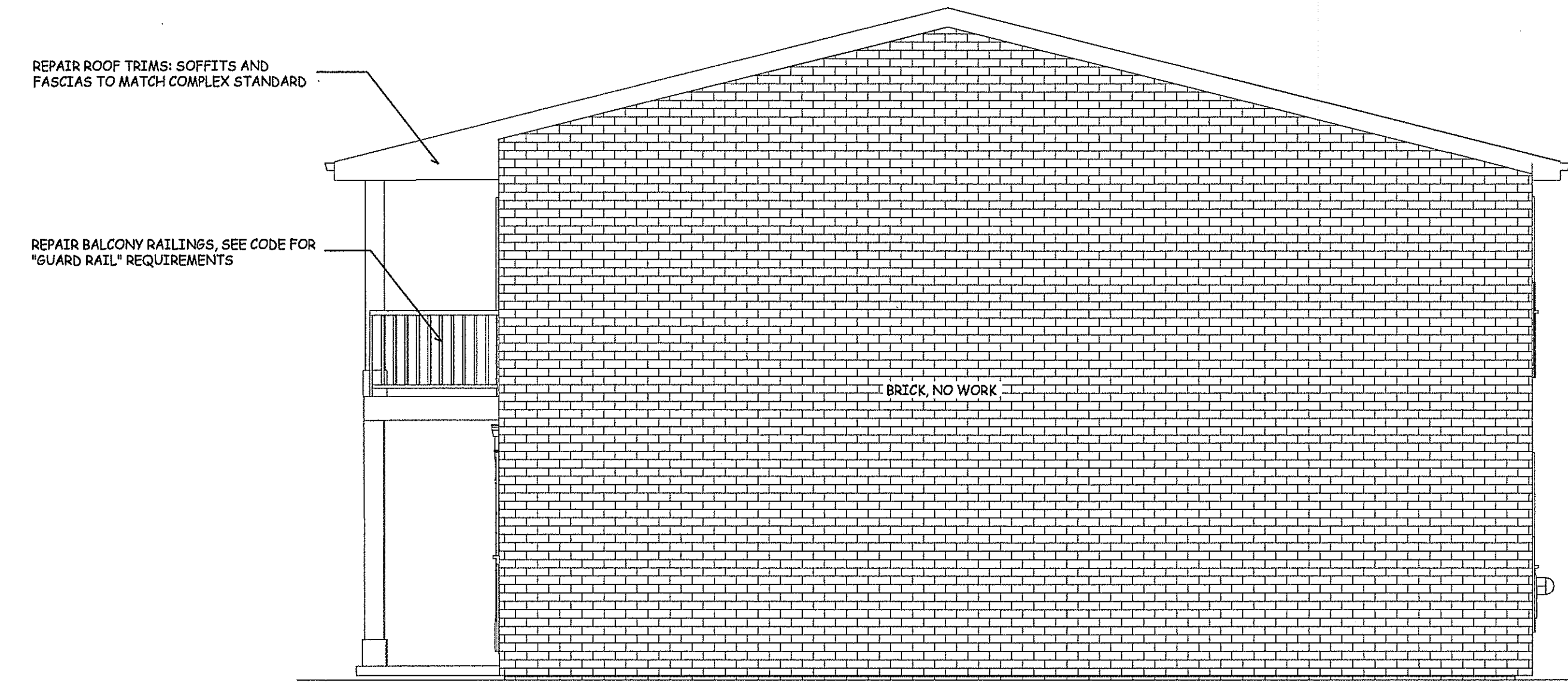
PLANS NOT VALID FOR PERMITS UNLESS SIGNED IN RED & IMPRESSED W/ SEAL

Eric C. Van Rood, Architect
 PA Reg. # 008681X - NJ Reg. # 21A08080100
Creative Design Associates, Inc.
 ARCHITECTURE INTERIORS SITE & SPACE PLANNING
 350 Callowhill Road
 Chaifont, PA 18914
 215-672-1155
 www.ArchitectVision.com



FIRE RESTORATION
 BELLMAWR MANOR: BLDG. # 9:
 STACKED UNITS: 180 ABOVE 181
 Borough of Bellmawr, Camden County, NJ

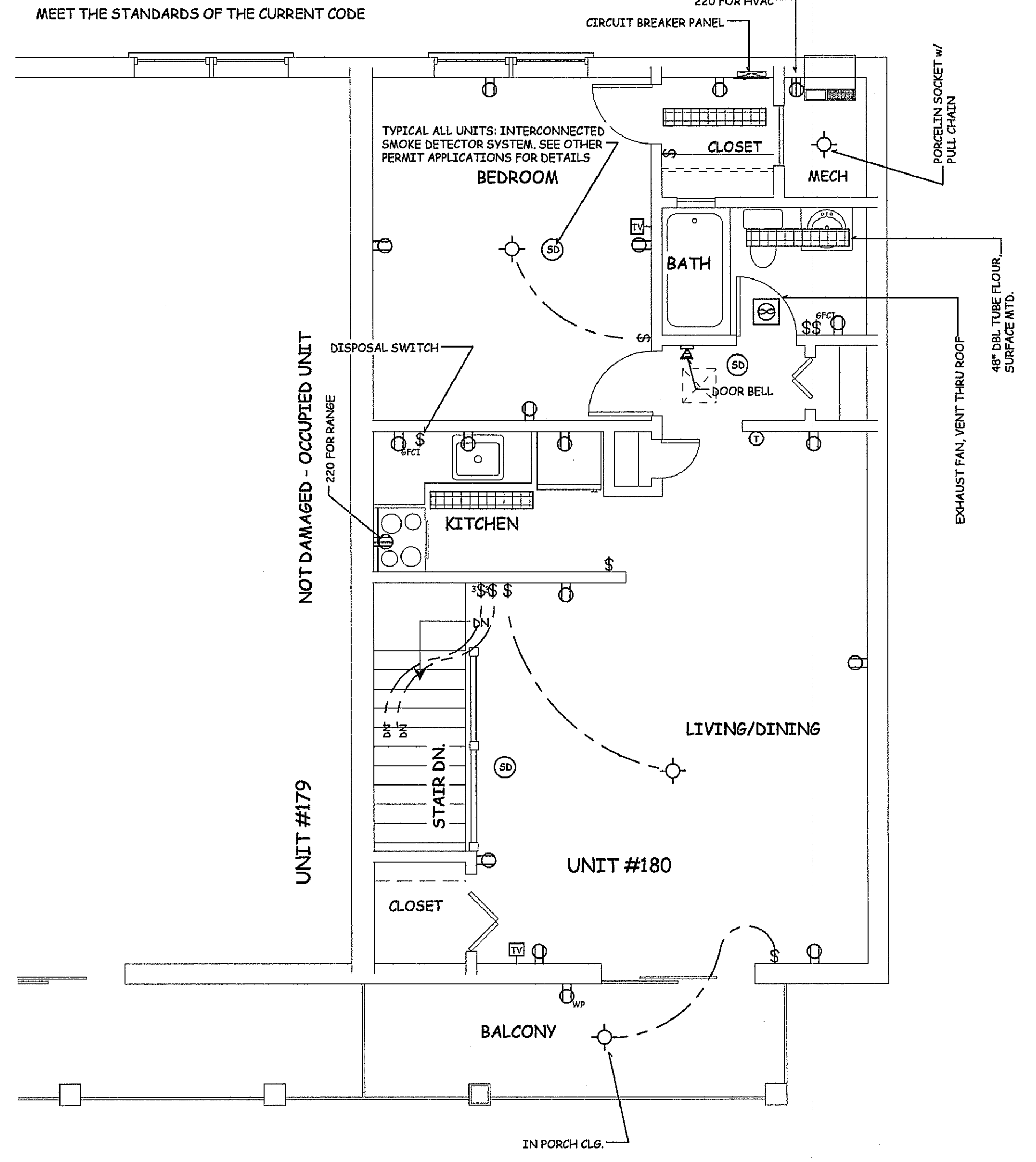
Sheet No.
3
 Comm. No. 11-2934 of 3



END EXTERIOR ELEVATION

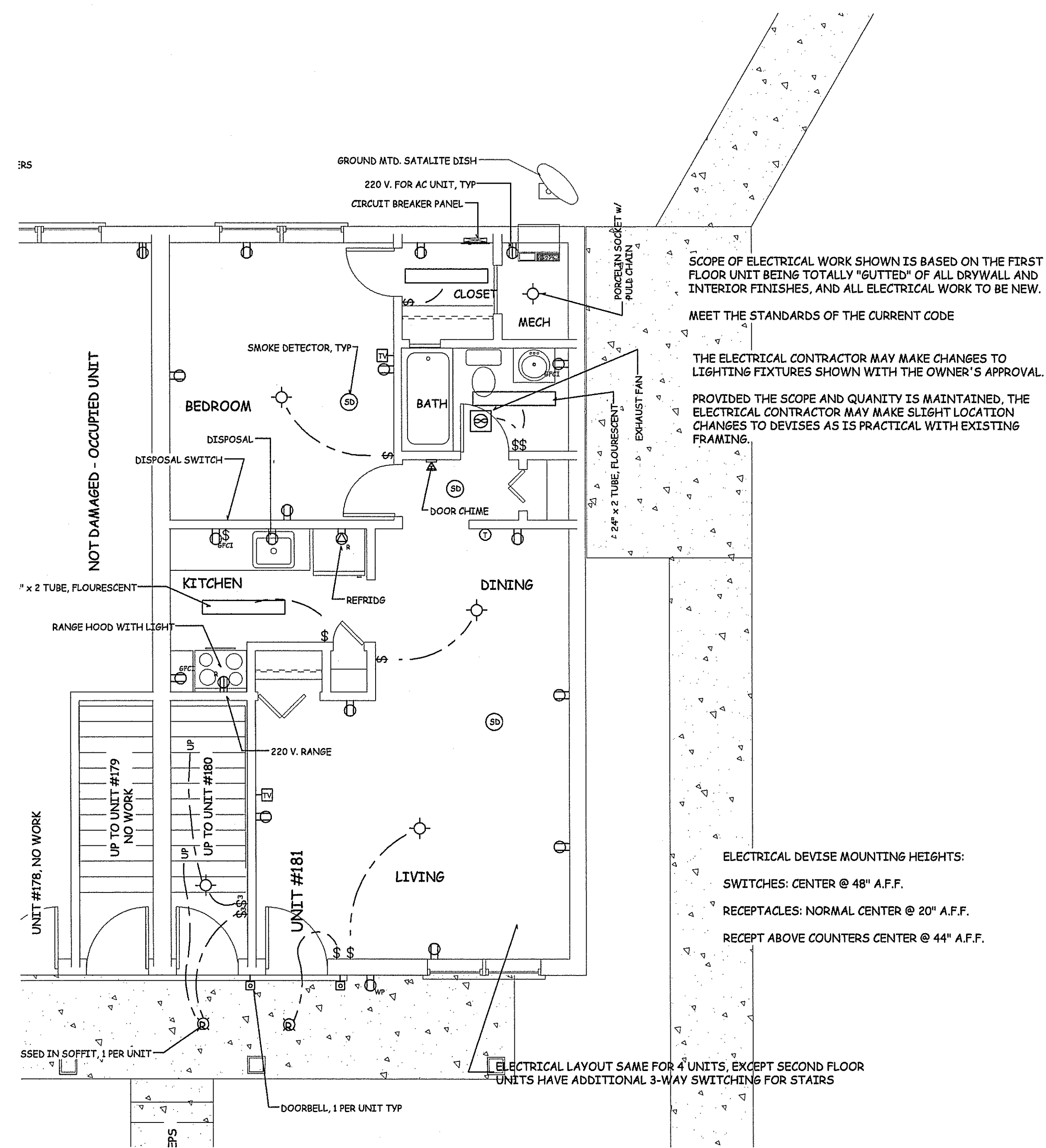
SCALE 1/4" = 1'-0"

SCOPE OF ELECTRICAL WORK SHOWN IS BASED ON THE SECOND FLOOR UNIT CEILING BEING REMOVED AND REPLACED WITH NEW DRYWALL. ALL ELECTRICAL DEVICES SHALL BE "TESTED", AND ONLY THOSE DEVICES WHICH "FAIL" BEING REPLACED WITH NEW.



SECOND FLOOR ELECTRICAL PLAN

SCALE 1/4" = 1'-0"



FIRST FLOOR ELECTRICAL PLAN

1
3

3
3

2
3