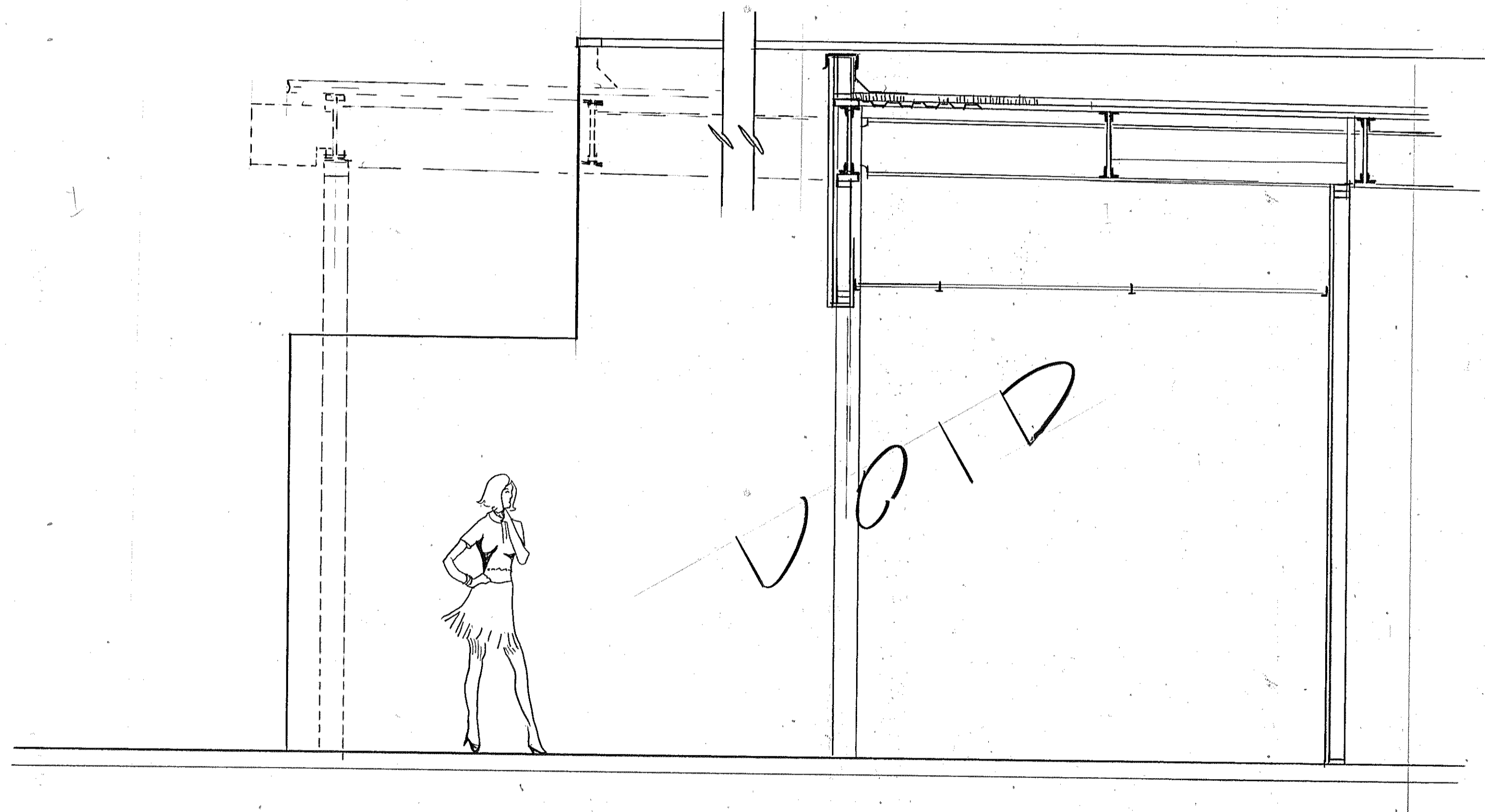
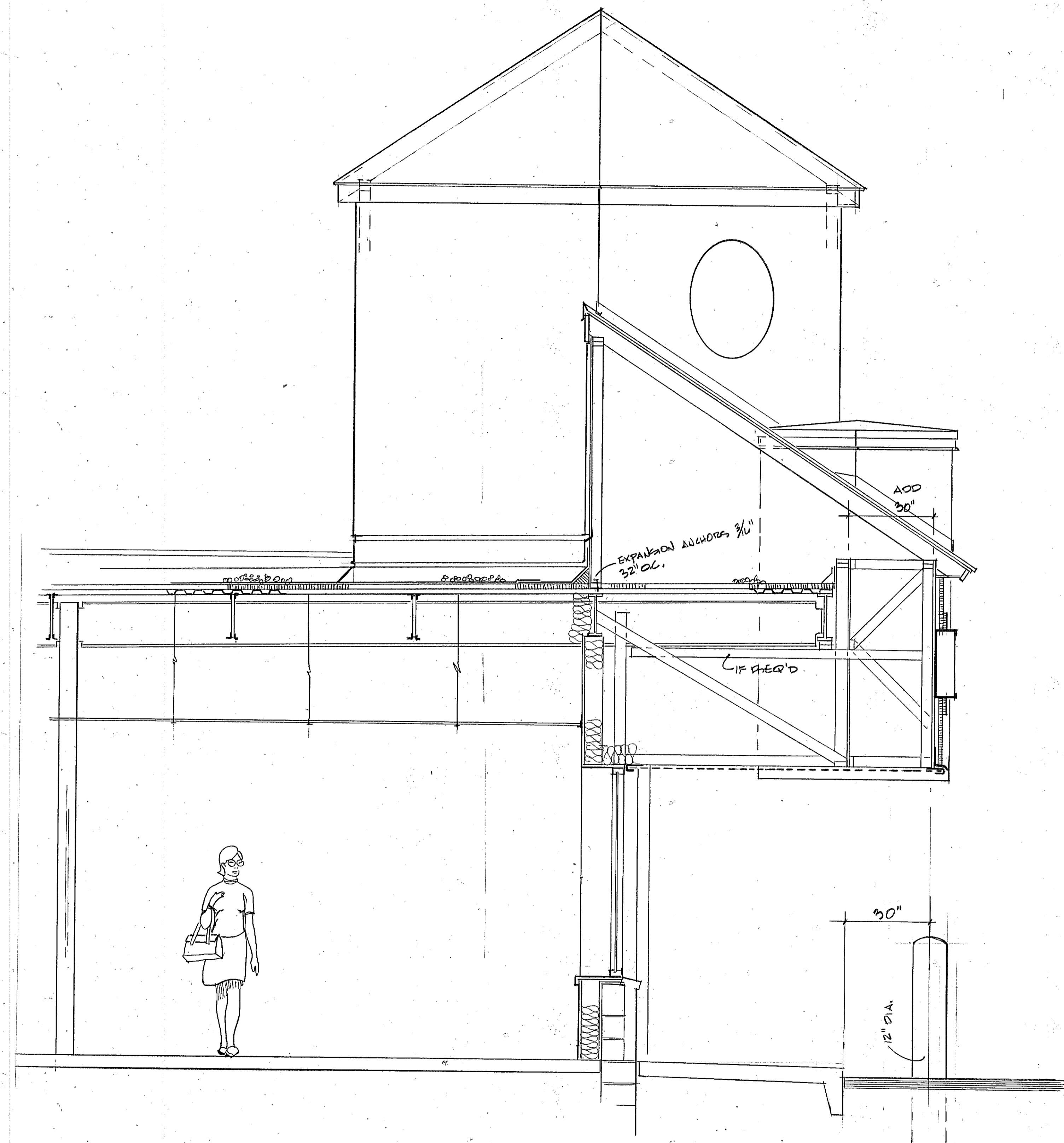


WOOD FRAMING "BASIC"

- STANDARDS: ALL ROUGH CARPENTRY TO COMPLY WITH "MANUAL OF FRAMING" BY NATIONAL FOREST PRODUCTS ASSOC., THE 2009 IBC INTERNATIONAL BUILDING CODE, AND WITH RECOMMENDATIONS OF AMERICAN PLYWOOD ASSOC.
- STRUCTURAL LUMBER (WALL STUDS, FLOOR CEILING JOISTS) OF NOMINAL 2" THICKNESS SHALL BE KILN DRIED (MAX. 19% MOISTURE CONTENT) #2 HEM-FIR WITH MIN. FB 1,200.
- ALL WOOD, IN PARTICULAR SILL PLATES, IN CONTACT WITH MASONRY SHALL BE PRESSURE TREATED, WITHOUT CHROMATED COPPER ARSENATE. ALL CONNECTORS IN CONTACT WITH PRESSURE TREATED WOOD TO BE STAINLESS STEEL OR HEAVY HOT DIPPED GALVANIZED.
- WIND BRACING HORIZONTAL: ALL WALLS SHALL BE COMPLETELY SHEATHED WITH APA RATED, 4-PLY, 1/2 INCH THICK PLYWOOD. NAILING, USING 8D COMMON NAILS, ALL AROUND SHEET PERIMETERS SHALL BE 4" O.C., INTERIOR FIELD NAILING SHALL BE 6" O.C. NOTE: NAILS IN THE PRESSURE TREATED SILL PLATE MUST BE STAINLESS STEEL OR HOT DIPPED GALVANIZED.
- ROOF SHEATHING: SHALL BE EXTERIOR GRADE PLYWOOD, MIN. 5/8" THICK WITH RAFTER SPACING OF 24" O.C. AND MIN. 1/2" THICK WITH RAFTER SPACING OF 16" O.C. SEE NOTES ABOUT RADIANT BARRIERS. NAIL SAME AS WALL SHEATHING. PROVIDE TWO (2) SIMPSON STRONG-TIE "PSCL" SHEATHING CONTINUITY CLIPS IN EACH RAFTER BAY AT JOINTS BETWEEN SHEATHING.



SECTION C UTILITY FRONT



SEE NOTES ON OTHER DRAWINGS

SECTION C NEW CENTRAL TOWER

SCALE 1/2" = 1'-0"

REV. #	REVISION DESCRIPTION	DATE
1	INTRO & START UP	NOV. 01, 2011
2	PERMIT SUBMISSION	APRIL 20, 2012
3	J/P/CTP	MAY 09, 2012

ONLY VALID FOR PERMITS w/ EMBOSSED SEAL & ORIGINAL 'REP' SIGNATURE

Eric C. Van Reed, Architect
Creative Design Associates, Inc.
 ARCHITECTURE INTERIORS SITE & SPACE PLANNING
 350 Callowhill Road
 Chelton, PA 18814
 PA-RA008011X NJ-21A000908100
 Voice: 215-672-1155
 www.ArchitectVn.com

EXTERIOR FACADE - "FACELIFT"
 M. T. EFFORT PLAZA
 PENNSYLVANIA 115, EFFORT, PA
 Chestnut Hill Township, Monroe County, PA.