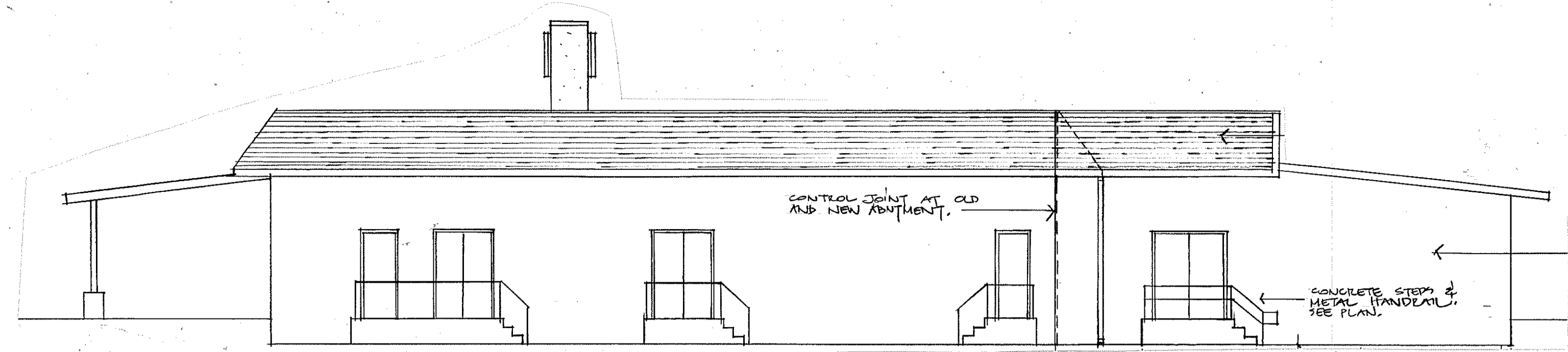
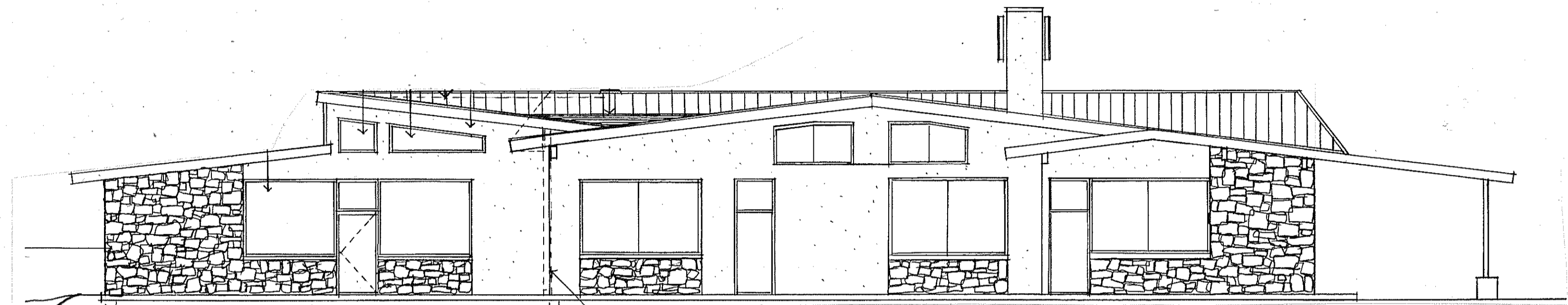


3 LOCATION MAP

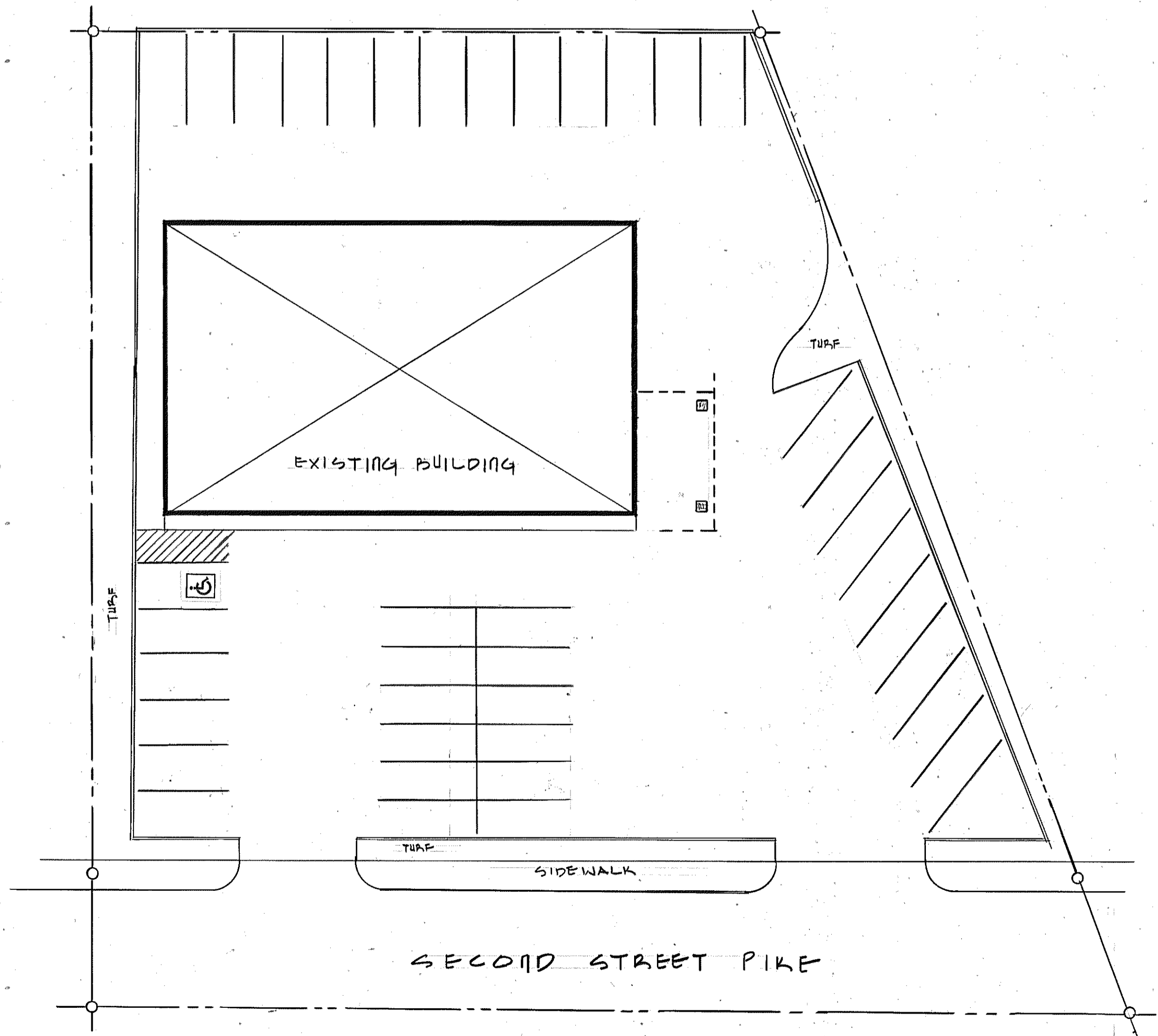


3 REAR ELEVATION



4 FRONT ELEVATION

SCALE 1/8" = 1'-0"

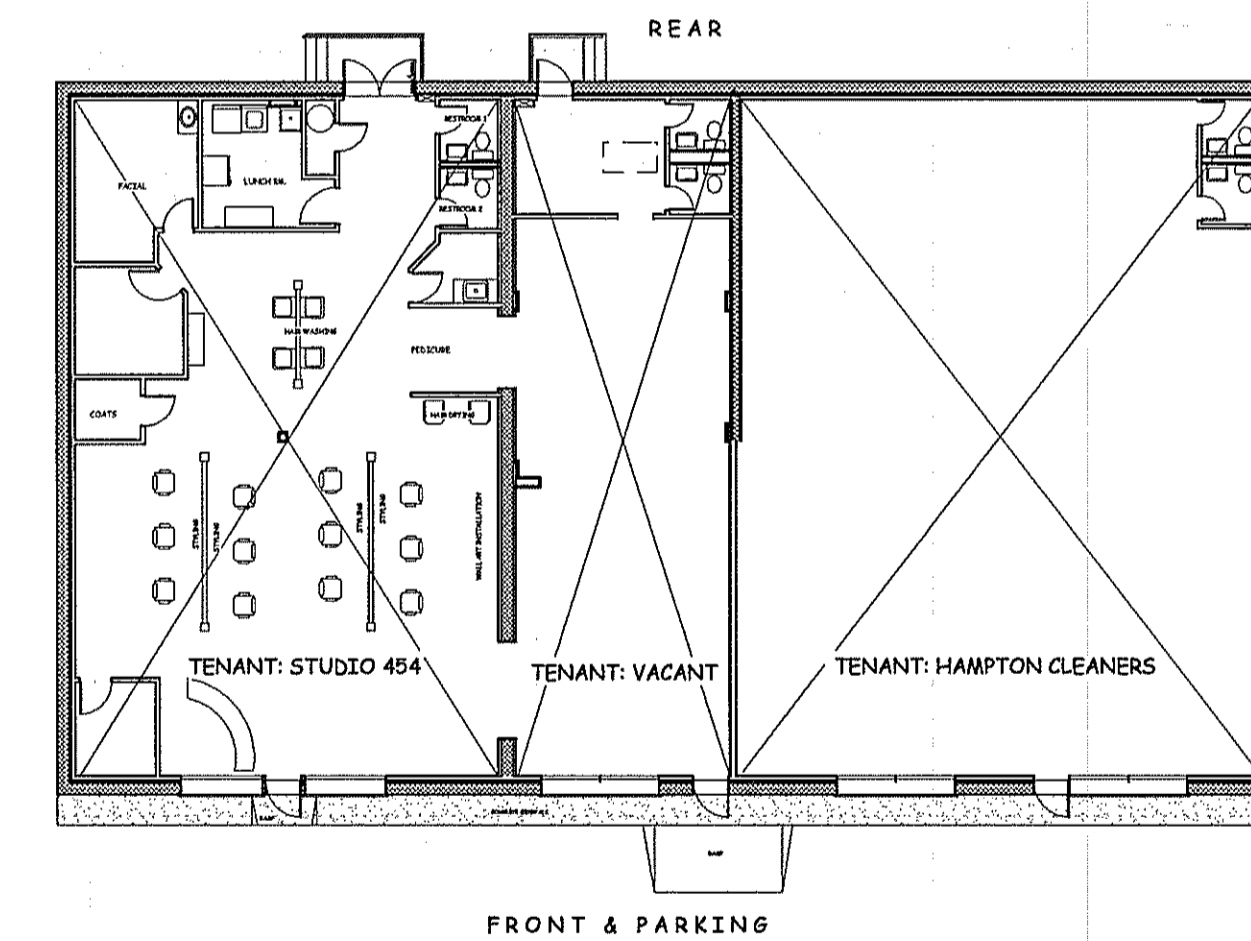


1 SITE PLAN

SCALE 1" = 20'

USE & OCCUPANCY GROUPS: 2009 INTERNATIONAL BUILDING CODE

	2009 INTERNATIONAL BUILDING CODE
SEC 304	BUSINESS GROUP B: "B" GROUP INCLUDES: GENERAL OFFICES, PROFESSIONAL OFFICES, SERVICE TYPE TRANSACTIONS, BARBER AND BEAUTY SHOPS, DRY CLEANERS, ETC.
AREA	ENTIRE BUILDING IS 5,998 GROSS SQ. FT. (BUILDING FOOTPRINT) & 1 STORY EXPANDED TENANT SALON 454 IS 3314 +/- SQ. FT.
SEC 503	NOTE FOR CONSTRUCTION TYPE, SEE SECTION 602 BELOW TABLE 503: BUILDING HEIGHT AND AREA LIMITATIONS: COMPLY WITH CONSTRUCTION TYPE 3B THIS BUILDING FALLS WITHIN THE LIMITS FOR ALL USE GROUPS LISTED IN THE CODE. THIS ALLOWS FOR "MIXED OCCUPANCIES" WITHOUT ADDITIONAL FIRE RATINGS BETWEEN TENANTS, PROVIDED THE REQUIREMENTS FOR THE MOST RESTRICTIVE OCCUPANCY IN THAT MIX ARE MAINTAINED. THIS PROJECT WILL "MIX" WITH ANOTHER ADJOINING "B" OCCUPANCY, NO FIRE RATING BETWEEN TENANTS IS REQUIRED.
SEC 602.5	CONSTRUCTION TYPE: "TYPE-3" EXTERIOR WALLS ARE OF NONCOMBUSTIBLE MATERIALS AND THE INTERIOR BUILDING ELEMENTS ARE OF ANY MATERIAL PERMITTED THIS CODE. IF TYPE 3A (PROTECTED): IT IS REQUIRED THAT ALL STRUCTURAL ELEMENTS, SUCH AS WALLS, COLUMNS, BEAMS, ETC. HAVE SOME "MEASURE" OF FIRE RATING. THE PROTECTION REQUIRED IS 1-HOUR, INCLUDING ROOF. WITH THE EXCEPTION OF PARTY WALL REQUIREMENTS: IN TYPE 3B (NOT PROTECTED): THE STRUCTURAL ELEMENTS HAVE NO REQUIRED FIRE RATING. RATING OF THE EXTERIOR WALL: IF GREATER THAN 10-FT. TO ANY STRUCTURE, NO RATING IS REQUIRED.
SEC 906	PORTABLE FIRE EXTINGUISHERS: ARE REQUIRED PER THE INTERNATIONAL FIRE CODE. BASICALLY 1 PER FLOOR, OR TENANT, 5 LB. MULTI-PURPOSE.
SEC 907.2.2	GROUP B: A MANUAL FIRE ALARM SYSTEM SHALL BE PROVIDED WHEN THE OCCUPANCY LOAD OF 500 OR MORE. AUTOMATIC FIRE DETECTION SYSTEMS: NOT REQUIRED.
CHAPTER 10	1006: EGRESS LIGHTING IS REQUIRED. 1011: EXIT SIGNS ARE REQUIRED. 1008: THE EXIT DOORS SHALL NOT BE LESS THAN 32-INCHES "CLEAR." ANY NEW OR REPLACED DOOR SHALL NOT BE LESS THAN A NOMINAL 36" DOOR.
SEC 1015	A MINIMUM OF 2 EXITS (OR MORE) SHALL BE PROVIDED TO ANY SPACE WHEN THE FOLLOWING EXIST: OCCUPANT LOAD IS 49 OR GREATER. COMMON PATH OF EGRESS TRAVEL EXCEEDS THE LIMITS OF SECTION 1014.
	2009 INTERNATIONAL BUILDING CODE
SEC 1004	OCCUPANCY LOAD: FOR "BUSINESS" DIVIDE GROSS AREA BY 100 SQ. FT. TOTAL GROSS EXPANDED SALON: 3,314/100 = 34.00
	ACCESSIBLE ENTRANCES: EXISTING REMAINS, NO CHANGES
	ACCESSIBLE PARKING: EXISTING REMAINS, NO CHANGES
	ACCESSIBLE ROUTE: NO CHANGES TO USE, OCCUPANCY, OR PRIMARY FUNCTION.



2 BLDG. FLOOR PLAN

SCALE 1/4" = 1'-0"

THIS DRAWING:

1. PROVIDES THE BASIC INFORMATION ABOUT THE PROPERTY AND SITE IMPROVEMENTS AT THE DATE OF THIS PROJECT APPLICATION.
2. PROVIDES THE BASIC CODE INFORMATION ABOUT THE ENTIRE BUILDING IN REGARDS TO CONSTRUCTION TYPE, USE AND OCCUPANCY.
3. ITEMIZES SOME BASIC LIFE SAFETY SYSTEMS INFORMATION.
4. FOR DETAIL INFORMATION ABOUT WORK OF THIS PROJECT, SEE OTHER DRAWINGS

REVISION DESCRIPTION	DATE
START UP & INITIAL SITE MEETING	MAR. 02. 2012
PERMIT SUBMISSION	MAR. 12. 2012

ONLY VALID FOR PERMITS W/ EMBOSSED SEAL & ORIGINAL "RED" SIGNATURE

Eric C. Van Rensdrecht
Architect
Creative Design Associates, Inc.
ARCHITECTURE INTERIORS SITE & SPACE PLANNING
Voice: 215-672-1155
www.ArchitectVision.com
350 Callowhill Road
Challott, PA 18914
PA#-PA008011X NJ#-21A00909100

454 Second Street Pike - Tenant Expansion
STUDIO 454 & COMPANY - SALON
UPPER SOUTHAMPTON TOWNSHIP, BUCKS CO., PA