

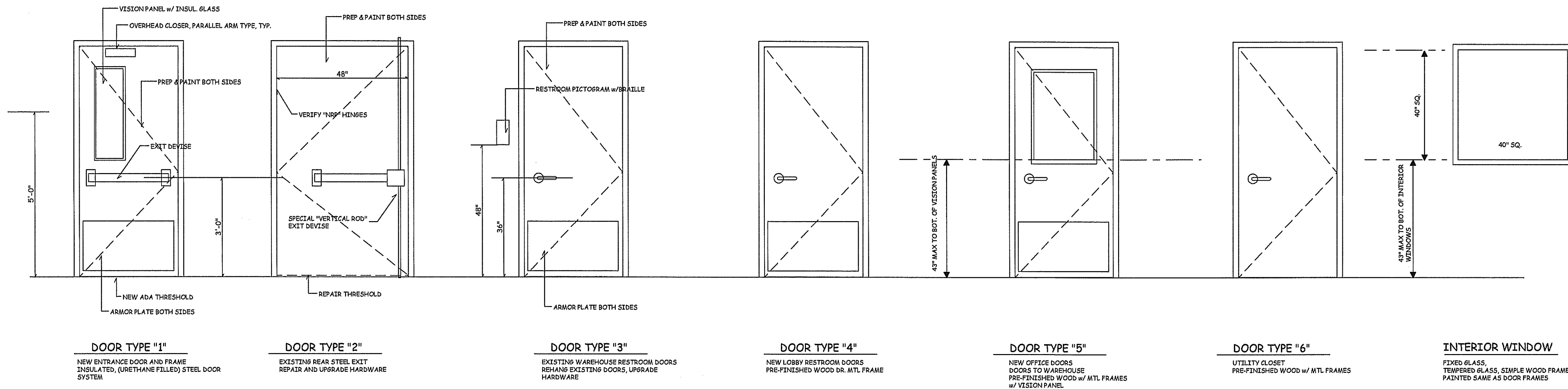
HEWI DOOR STOP: CATALOG # 937.30.0 THEN SELECT COLOR OF YOUR CHOICE. THIS IS A WALL MOUNTED UNIT. THERE IS NO CLEANER, EASIER TO INSTALL PIECE AVAILABLE.

D O O R S C H E D U L E

MARK	TYPE	SIZE	DESCRIPTION	FRAME	HINGES	EXIT DEVISE	LOCKSET	CYLINDER	CLOSER	WEATHER STRIPPING	SECURITY	FINISH	REMARKS
1	1	3'-0" x 6'-8" x 1-3/4"	18 GA. GALV. INSUL. HOLLOW MTL. BY REPUBLIC DOORS AND FRAMES, 16 GA. FRAME, ADA ENTRY, PAINT	16 GA. HOL. MTL., PAINTED	1-1/2 PR. BALL BEARING, NON-REMOVABLE PINS	EXIT DEVISE w/ EXT. LEVER SET & LOCK	SEE NOTES	BEST LOCK	ADA, OVER HD CLOSER, MOUNT ON DOOR, PARALLEL ARM TYPE	ALL AROUND	SEE NOTES	US260 - SATIN CHROME, EVERYTHING	ADA THRESHOLD ARMOR KICK PLATE BOTH SIDES
2	2	EXISTING 4'-0" x 6'-8" x 1-3/4"	REUSE EXISTING, UPGRADE HARDWARE, PAINT	EXIST, PREP, PAINT	do	VERTICAL ROD EXIT DEVISE w/ NO EXTERIOR TRIM	SEE NOTES	NO LOCK	OVER HEAD CLOSER, MOUNT ON DOOR, PARALLEL ARM TYPE	ALL AROUND	SEE NOTES	do	ARMOR KICK PLATE BOTH SIDES
3	3	EXISTING 3'-0" x 6'-8" x 1-3/4"	EXISTING RESTROOM REUSE EXISTING, UPGRADE HARDWARE, PAINT	do	do	do	ADA LEVER LATCHSET w/ INTERIOR THUMBTURN PRIVACY BOLT	do	ADA, OVER HD CLOSER, MOUNT ON DOOR, PARALLEL ARM TYPE	DOOR SILENCERS		do	ARMOR KICK PLATE BOTH SIDES
4	3	EXISTING 3'-0" x 6'-8" x 1-3/4"	do	do	do	do	do	do	do	do		do	ARMOR KICK PLATE BOTH SIDES
5	5	3'-0" x 7'-0" x 1-3/8"	INTERIOR, PREFINISHED WD, SOLID CORE, MOHAWK DOOR, 2000 SERIES, PREMIUM PRE-FIN, COLLECTION OAK, IN WALNUT FINISH.	16 GA. HOL. MTL., PAINTED	do	do	ADA LEVER LATCHSET, NO LOCKS	do	do	do		do	ARMOR KICK PLATE BOTH SIDES
6	4	3'-0" x 7'-0" x 1-3/8"	do	do	do	do	ADA LEVER LATCHSET w/ INTERIOR THUMBTURN PRIVACY BOLT	do	do	do		do	ARMOR KICK PLATE BOTH SIDES
7	4	3'-0" x 7'-0" x 1-3/8"	do	do	do	do	do	do	do	do		do	
8	5	3'-0" x 7'-0" x 1-3/8"	do	do	do	do	ADA LEVER LATCHSET, NO LOCKS	do	do	do		do	
9	5	3'-0" x 7'-0" x 1-3/8"	do	do	do	do	do	do	do	do		do	
10	5	3'-0" x 7'-0" x 1-3/8"	do	do	do	do	ADA LEVER LATCHSET, w/ LOCK	BEST LOCK	do	do		do	
11	5	3'-0" x 7'-0" x 1-3/8"	do	do	do	do	do	NO LOCK	do	do		do	
12	5	PAIR, DBL., ACTING 6'-0" x 7'-0" x 1-3/8"	do	do	3 PR. BALL BEARING	do	NO LATCHING	do	DBL. ACTING, SELF CENTERING DEVISE	NONE		do	"HAND TRUCK BUMPERS" BOTH SIDES
13	6	3'-0" x 6'-8" x 1-3/8"	do	do	1-1/2 PR. BALL BEARING, NON-REMOVABLE PINS	do	ADA LEVER LATCHSET	do	NONE	DOOR SILENCERS		do	
DOCK 1	REPAIR DOOR CLOSER MOTORS, REHABILITATE												
DOCK 2	REPAIR DOOR CLOSER MOTORS, REHABILITATE												

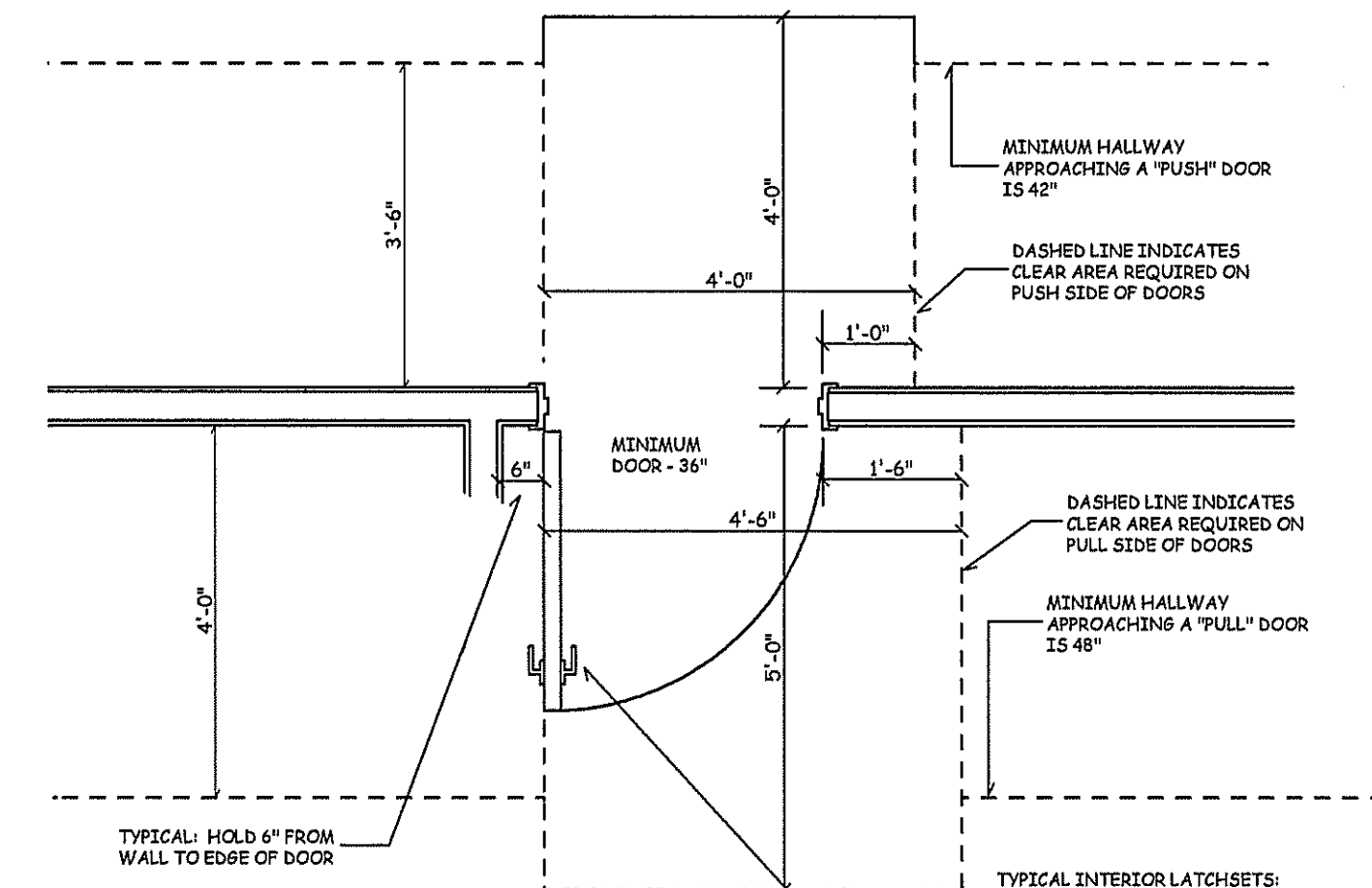
DOOR AND HARDWARE SUPPLIER SHALL PROVIDE SHOP DRAWINGS INCLUDING SCHEDULE AND CATALOG CUTS CONFIRMING ALL INFORMATION SHOWN, PROVIDE MANF'S NOTES AND INSTALLATION INSTRUCTIONS AND ANY "ADA" DETAILS

HINGES: ALL HINGES TO HAVE NON REMOVABLE PINS



DOOR ELEVATIONS & NOTES

SCALE 1/2" = 1'-0"



MAIN ENTRANCE DOOR

PROVIDE DOUBLE CYLINDER LOCKS w/ PIVOT-TYPE MAXIMUM SECURITY BOLT MS185, BOLT SIZE 5/8" x 1-3/8" w/ 1/3" THROW, AS MANUFACTURED BY ADAMS RITE MANUFACTURING CO., CAPABLE OF ACCEPTING A BEST LOCK KEY SYSTEM. LANDLORD SHALL PROVIDE BEST LOCK CYLINDER, TENANT SHALL PROVIDE BEST LOCK CORE.

REAR EXIT

PROVIDE STANLEY PHI APEX EXIT DEVICE (PRECISION HARDWARE) 200 SERIES VERTICAL ROD EXIT DEVISE WITH ALARM, MODEL #2201ALK-3 x FIELD FOR "HANDING". VERTICAL RODS ARE TO HAVE ROD GUARDS INSTALLED AND SECURITY SCREWS INSTALLED IN ALL THE UNIT'S COVERS. ALL GUARDS AND SCREWS SHALL BE FROM THE DEALER TECHNICIAN. THE KEY CYLINDER SHALL BE 1-1/4" C-4 CAM AND RECEIVE A BEST HARDWARE CORE. THE DEVICE SHALL INCLUDE "EMERGENCY EXIT" DECAL.

ADA "ACCESSIBLE FACILITY"

THIS FACILITY IS "ACCESSIBLE" FROM THE ENTRANCE DOOR THRU THE ENTIRE FACILITY INTERIOR. ALL BUILDERS HARDWARE SHALL COMPLY

GUARDRAILS & HANDRAILS

- HANDRAILS SHALL HAVE A CIRCULAR CROSS SECTION WITH A DIAMETER OF 1.25 TO 2 INCHES, OR A NONCIRCULAR CROSS SECTION WITH A PERIMETER DIMENSION OF AT LEAST 4 INCHES BUT NOT MORE THAN 6.25 INCHES AND A LARGEST CROSS-SECTION DIMENSION NOT EXCEEDING 2.25 INCHES, OR THE SHAPE SHALL PROVIDE EQUIVALENT GRASP ABILITY. EDGES SHALL HAVE A MINIMUM RADIUS OF 1/8 INCH. SEE CODE FOR ADDITIONAL REQUIREMENTS.
- GUARDRAILS: STAIR LANDINGS, BALCONIES OR RAISED FLOOR SURFACES LOCATED MORE THAN 30 INCHES ABOVE THE FLOOR OR GRADE BELOW SHALL HAVE GUARDRAILS NOT LESS THAN 42 INCHES IN HEIGHT MEASURED VERTICALLY FROM THE NOSING OF THE TREADS.
- GUARDRAILS SHALL HAVE INTERMEDIATE RAILS (BALUSTRADE) OR ORNAMENTAL CLOSURES WHICH DO NOT ALLOW THROUGH PASSAGE OF AN OBJECT OF 4-INCH DIAMETER OR MORE.
- EXCEPTION: THE TRIANGULAR OPENING FORMED BY THE RISER, TREAD AND BOTTOM RAIL OF A GUARDRAIL AT THE OPEN SIDE OF A STAIRWAY SHALL BE PERMITTED TO BE OF A SIZE THAT A SPHERE 6-INCHES IN DIAMETER CANNOT PASS THROUGH.
- HANDRAIL AND GUARDRAIL DESIGN SHALL BE OF SUFFICIENT STRENGTH TO RESIST A LOAD OF 50 POUNDS PER LINEAR FOOT APPLIED IN ANY DIRECTION ALONG THE TOP, AND TO TRANSFER THIS LOAD THROUGH SUPPORTS TO THE STRUCTURE. ALSO, HANDRAILS AND GUARDS SHALL BE ABLE TO RESIST A SINGLE CONCENTRATED LOAD OF 200 POUNDS APPLIED IN ANY DIRECTION ALONG THE TOP, AND COMPONENTS, AND INFILL BALUSTRADES SHALL BE DESIGNED TO RESIST A HORIZONTALLY APPLIED LOAD OF 50 POUNDS APPLIED ON AN AREA OF 1 SQ.FT., WHERE DEFLECTION OF ALL MEMBERS (HORIZONTAL AND VERTICAL) SHALL BE LIMITED TO L/240.

PAINT GALVANIZED HAND RAILS

- SURFACE PREPARATION METHOD A (PREFERRED SHOP PRIMING): SSPC-SP1 TO REMOVE ALL SOLUBLE CONTAMINATION. THOROUGHLY ROUGHEN ENTIRE SURFACE TO BE COATED USING COMPRESSED AIR NOZZLE BRUSH-OFF BLAST CLEANING WITH A FINE ABRASIVE TO ACHIEVE A UNIFORM ANCHOR PROFILE (1.0 TO 2.0 MILS).
- SURFACE PREPARATION METHOD B (ALTERNATE METHOD WHEN METHOD A IS NOT FEASIBLE): SSPC-SP1 TO REMOVE ALL SOLUBLE CONTAMINANTS. HAND OR POWER TOOL CLEAN TO REMOVE INSOLUBLE CONTAMINANTS SUCH AS ZINC OXIDES. CHEMICALLY TREAT WITH ONE OF THE FOLLOWING PRODUCTS TO ETCH THE GALVANIZED SURFACE TO BE COATED. HENKEL GALVAPREP 5 OR CLEAN & ETCH BY GREAT LAKES LABORATORIES. NOTE: IT IS IMPERATIVE TO FOLLOW THE ABOVE MANUFACTURERS' RECOMMENDATIONS IN ORDER TO PROVIDE AN EFFECTUAL PREPARATION.
- PRIME - TNEPEC SERIES N69 HI-BUILD EPOXOLINE II APPLIED AT 2-3 MILS DFT
- FINISH - TNEPEC SERIES 73 ENDURA SHIELD APPLIED AT 2-3 MILS DFT

CAULKING

- PERMITTED MATERIALS: ALL EXTERIOR CAULKING SHALL BE TWO-PART POLYURETHANE COMPONENT BASED. NO SILICONE CAULKS ARE PERMITTED UNLESS THE APPLICATION IS FOR A "GLASS TO GLASS" ADHESIVE. ALL CAULKS USED IN PREPARATION FOR INTERIOR PAINTING SHALL BE POLYURETHANE OR LATEX, WITH NO SILICONES.
- WHERE TO APPLY: CAULKING SHALL BE PROVIDED:
- BETWEEN ALL EXTERIOR DISSIMILAR MATERIALS WHERE A MECHANICAL CONNECTION DOES NOT MAKE A WATERTIGHT SEAL.

O P E N I N G S & H A R D W A R E


REV. #	DATE	DESCRIPTION
03-21-2013	03-21-2013	START UP
05-02-2013	05-02-2013	PROGRESS REVIEW
06-03-2013	06-03-2013	FOR PERMIT REVIEW
06-13-2013	06-13-2013	PERMIT UPDATES

PLANS NOT VALID FOR PERMITS UNLESS SIGNED IN "RED" & IMPRESSED w/ SEAL

Eric C. Van Reed, Architect
Creative Design Associates, Inc.
 SITE & SPACE PLANNING
 INTERIORS
 ARCHITECTURE
 PA# RA008011X
 NJ# 21A10090100
 215-672-1155
 www.ArchitectVision.com

E. R. B. & SONS, Inc.
 General Contracting & Building
 Lic. # PA083365
 1117 Eagle Road
 Huntingdon Valley, PA 19005
 Voice: 267-228-7451

855 Pennsylvania Blvd.
"UNIT B" TENANT FIT-OUT
 Township of Lower Southampton, Bucks County, PA

Sheet No.

 Comm. No.
 2013-2967 of 9